



Yankee Dipper

Cleaning: Please for the sake of the birds, keep your feeders clean! Dirty feeders can harm the birds. Clean with a mild dish detergent using a soft brush, sponge or cloth, and rinse thoroughly with water for simple cleaning. **Sanitize:** Rinse with a 50/50 solution of white vinegar and water. Do not soak metal components in the 50/50 solution of white vinegar and water as this may damage the finish. Rinse thoroughly with water. **Dry completely before filling with seed.**

Disassemble for Easy Cleaning or Part Replacement

1. Remove the solitary Phillips screw in the outside ring on the bottom of the perch assembly.
2. The perch assembly can be removed by turning counter clockwise (viewed from the bottom) until the hash mark on the lip of the perch assembly lines up with the left hash mark on the port. You will feel a click.
3. Remove the four tube screws to release the tube from the port. The port and silo assembly may be disassembled for easy and thorough cleaning, by removing the two screws located inside the bottom of the port.
4. Remove the cap and bail wire assembly by sliding the cap up the bail wire. Gently pull each end of the bail wire out of the bail rod.
5. Remove the bail rod by laying the tube on a flat surface with the bail rod parallel to the table/floor. Apply pressure to the top of the tube until it becomes oval/oblong in shape to release one side of the bail rod. Reach inside the tube and shimmy the other end out of its hole.

Assemble

1. Install the bail rod by lining the bail rod up with both of the designated holes in the top of the tube. Apply pressure to the outside of the tube at both ends of the bail rod until the tube locks into the grooves in the bail rod.
2. Replace the cap and bail wire assembly by inserting each end of the bail wire into the bail rod, making certain they are fully inserted before sliding the cap back into place on top of the tube.
3. Assemble the port and silo assembly, if you chose to disassemble for easy and thorough cleaning, by placing the silo assembly inside the port. Hold the silo assembly and port upside down with the hash marks on the port facing you. Rotate the silo assembly until the three holes in the port line up with the three plastic posts on the silo assembly.
Important: Replace the two screws leaving the one screw hole to the right of the hash mark on the port empty.
4. Install the tube by lining up the four holes in the tube with the four holes in the port and replace the tube screws. **Do not overtighten the screws as this will cause the tube to crack, especially in hot weather.**
5. Install the perch assembly by placing it up inside the port and aligning the hash mark on the lip of the perch assembly with the left hash mark on the port and turn clockwise (viewed from the bottom) until it clicks into place.
6. Replace the solitary Phillips screw in the outside ring on the bottom of the perch assembly.

Spring Replacement for Perch Assembly

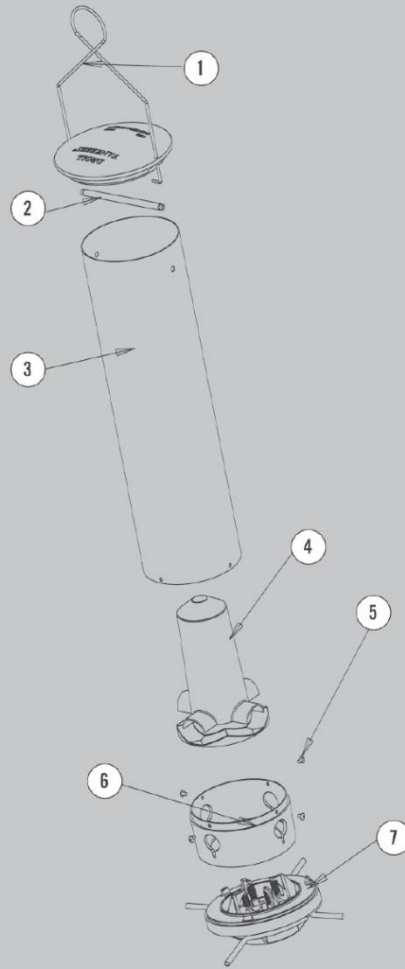
1. Follow steps 1 and 2 for removing the perch assembly.
2. Remove the broken spring. Hold the perch which had the broken spring in its upright position. Insert the angled wire on the spring through the hole in the end of the perch. Lift the spring by the curved end and place over the plastic bracket and into the slot. Using needle nose pliers, bend the wire that was inserted through the hole upward until it is vertical with the side of the perch.
3. Follow steps 5 and 6 for installing the perch assembly.

Feeder Placement

- Hang the feeder far enough away from any deck rail, pole, tree, etc. so that the squirrel must place all of its body weight on the perch. The recommended minimum is 14", but a greater distance may be preferable since the mechanism is based on weight. A squirrel that is able to lean across to the feeder by placing only part of its weight on the perch may avoid collapsing the perch.
- Red squirrels and chipmunks may not be heavy enough to collapse the perch, but placing the feeder so that they have to jump to it will significantly increase your chances of deterring them.



**YANKEE DIPPER
YCPD-90 Parts Diagram**



key #	Part name	Part #
1	cap & bail wire assembly	YCP9016
2	bail rod	YF50
3	tube	YF30-55
4	silo assembly	YCP9020
5	tube screw (4)	YF40
6	port	YCP9010
7	perch assembly	YCP90 PERCH ASSEMBLY

Droll Yankees Inc. • drollyankees.com
 Customer Service: drollbird@drollyankees.com
 (860) 779-8980 or (800) 352-9164